



 HW VENTILATION



DATA SHEET

---

FANS FOR RADIATORS AND ENGINE  
COOLING SYSTEMS



## Product features

**HW Ventilation** offers a wide **range of axial fans for radiators and engine cooling systems**, both for mobile and for stationary applications.

Based on their profile, our fan blades can be classified in two categories:

- ① **sickle profile**
- ② **airfoil profile**

Both profiles are suitable for being employed in highly efficient, low noise radiators and engine cooling systems, and achieve optimal performance levels even in the hardest environments.

Thanks to their stretched shape, the airfoil profile blades can generate higher and homogeneous airflows. The sickle profile blades can reach higher pressures at lower rpm.

These factors make both blades an excellent suit for engine cooling solutions. The twisted design of our blades provides a homogeneous airflow, while the leading edge and the trailing edge are designed to provide low turbulence and low noise.

Our blades can have a fixed pitch angle, or a variable pitch angle.

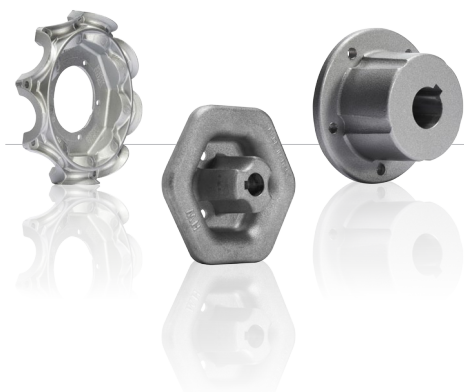
The blades of our fans are available in a huge variety of materials, like traditional plastics (glass-reinforced polypropylene and polyamide), aluminum, special/ customized solutions (i.e. ATEX).



Material	Description	Color	Applications	Op. temperature
PP	Polypropylene (PP)	Yellow ●	TS	Da -10°C a +80°C
PPG	Glass-reinforced Polypropylene (PP 30% glass)	Orange ●	TS, TM, SR, C, Q	Da -20°C a +85°C
PAG	Glass-reinforced Polyamide (PA6)	White ○	TS, TM, SR, C, Q	Da -40°C a +120°C
PAS	Glass-reinforced Polyamide (PA6)	Black ●	SR	Da -40°C a +120°C
ALU	Aluminum		C	Da -80°C a +300°C
RYT	Ryton	Brown ●	TS, TM, Q	Da -50°C a +200°C
PAA	Antistatic Polyamide	Black ●	TS, TM, Q	Da -40°C a +120°C
PAX	Antistatic, Self-extinguishing PA	Black ●	TS, TM, Q	Da -40°C a +120°C
PAM	Antistatic, Self-extinguishing, Magnetically-shielded PA	Black ●	TS, TM, Q	Da -40°C a +120°C
PAT	Glass-reinforced Polyamide for Rail Applications*	Black ●	TS, Q	Da -40°C a +120°C


\* PAT is a special glass reinforced polyamide, that is certified against the main international standards of fire resistance and smoke opacity - EN 45545, NF F16-101/102, NFPA 130

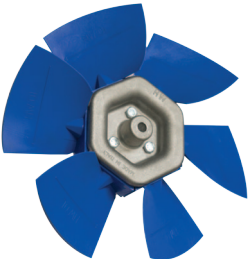
Our fixed pitch and variable pitch hubs are entirely made of aluminum and are highly resistant to mechanical stress and to extreme temperatures. Depending on how the fan is mounted on the final application, our hubs are machined and adapted to the needs of our customers. If needed, we couple our hubs with highly customized bores.




## Dimensions and features


### • Fixed-pitch angle blades


TS			Model	Configurations blades	Hubs	Min Ø	Max Ø	Light, efficient and low noise
	G	3/4/5/6/7/8/10/14	6/8/10/14	230	672			
	D	3/4/5/6/7/8/10/14/20	6/8/10/14/20	230	906			

Q			Model	Configurations blades	Hubs	Min Ø	Max Ø	Light, higher performances at low rpm and low noise
	Q	3/4/5/6/7/8/10/14	6/8/10/14	230	750			

### • Variable-pitch angle blades

TM			Model	Configurations blades	Min Ø	Max Ø	Robust, efficient and low noise
	N	3/4/5/6/8/9/12/16	300	1010			
	V	3/4/5/6/8/9/12/16	450	1270			

SR			Model	Configurations blades	Min Ø	Max Ø	Robust, higher performances at low rpm and low noise
	SR	3/5/6/8	550	1100			

C			Model	Configurations blades	Min Ø	Max Ø	Robust, efficient, higher performances at low rpm and low noise
	C-S	5/6/8/9/12/16	450	1026			
	C	3/4/5/6/8/9/12/16	450	1282			



**HW VENTILATION s.r.l.**

---

Viale dei Kennedy 81-83  
20027 Rescaldina (MI) - ITALY  
Tel. +39 0331 1558 815  
info@hwventilation.it  
www.hwventilation.it



[hwventilation.it](http://hwventilation.it)